

- KEY**
- 1 New paved driveway to interface with High St footpath palette and provide connection to existing Children's Hospital drop-off
  - 2 Endemic planting with seasonal colour adjacent to building entry
  - 3 1:21 walkway to the entry of Hospital Rd with removable bollards limiting vehicle access
  - 4 Path connecting to existing Children's Hospital entryway
  - 5 Covered walkway between new and existing Children's Hospitals to Architect's detail
  - 6 Raised planter bed with mounding for trees and seating integrated to the edge
  - 7 Substation location
  - 8 Vehicular-grade precinct paving to Hospital Road
  - 9 New pedestrian connection to the existing Fairy Garden
  - 10 Raised planter with integrated seating adjacent to the Hospital Road building entry
  - 11 Covered walkway between new and existing Children's Hospitals to Architect's detail
  - 12 New pedestrian connection to the existing George Gregan playground
  - 13 Gated indigenous garden adjacent to the family room with corten screen
  - 14 Raised planting adjacent to existing built form
  - 15 Raised planting adjacent to Sensory Garden with integrated seating
  - 16 Landscape connection into Ainsworth Plaza

**WARNING**

**DIAL BEFORE YOU DIG**  
www.1100.com.au

Services shown on this drawing are approximate only. The exact location is to be confirmed on site by contractor prior to commencement of work.

These drawings shall be read in digital format or colour hardcopy.

These drawings shall be read in conjunction with all relevant information (not limited to legends, schedules, specifications).

These drawings shall be read in conjunction with any Engineers, Architects or other consultant information (not limited to drawings, legends, schedules, specifications).

Check all dimensions and site conditions prior to commencement of any work or procurement or fabrication of any services, materials, fittings or equipment.

Not be reproduced or distributed without prior permission of the Landscape Architect.

**NOTES / KEY PLAN**

DATE	REV	AMENDMENTS
09/09/22	1	SSD REF - FOR REVIEW
27/10/22	2	SSD REF - FOR REVIEW
12/20/22	3	SSD REF - FOR REVIEW

SSD REF extent of works

**ASPECT Studios**

ASPECT Studios Pty Ltd  
Level 1, 78-80 George Street  
Redfern NSW 2016  
Australia  
T 02 9699 7182  
www.aspect-studios.com  
sydney@aspect-studios.com  
ABN 11 120 219 561

**PROJECT** 20087  
Sydney Children's Hospital Stage 1 & Children's Comprehensive Cancer Centre

**CLIENT**  
Billard Leece Partnership

**Billard Leece Partnership**

**NORTH** **SCALE A1** | **SCALE A3** **DRAWN** **CHECKED**  
1:300 SL AW

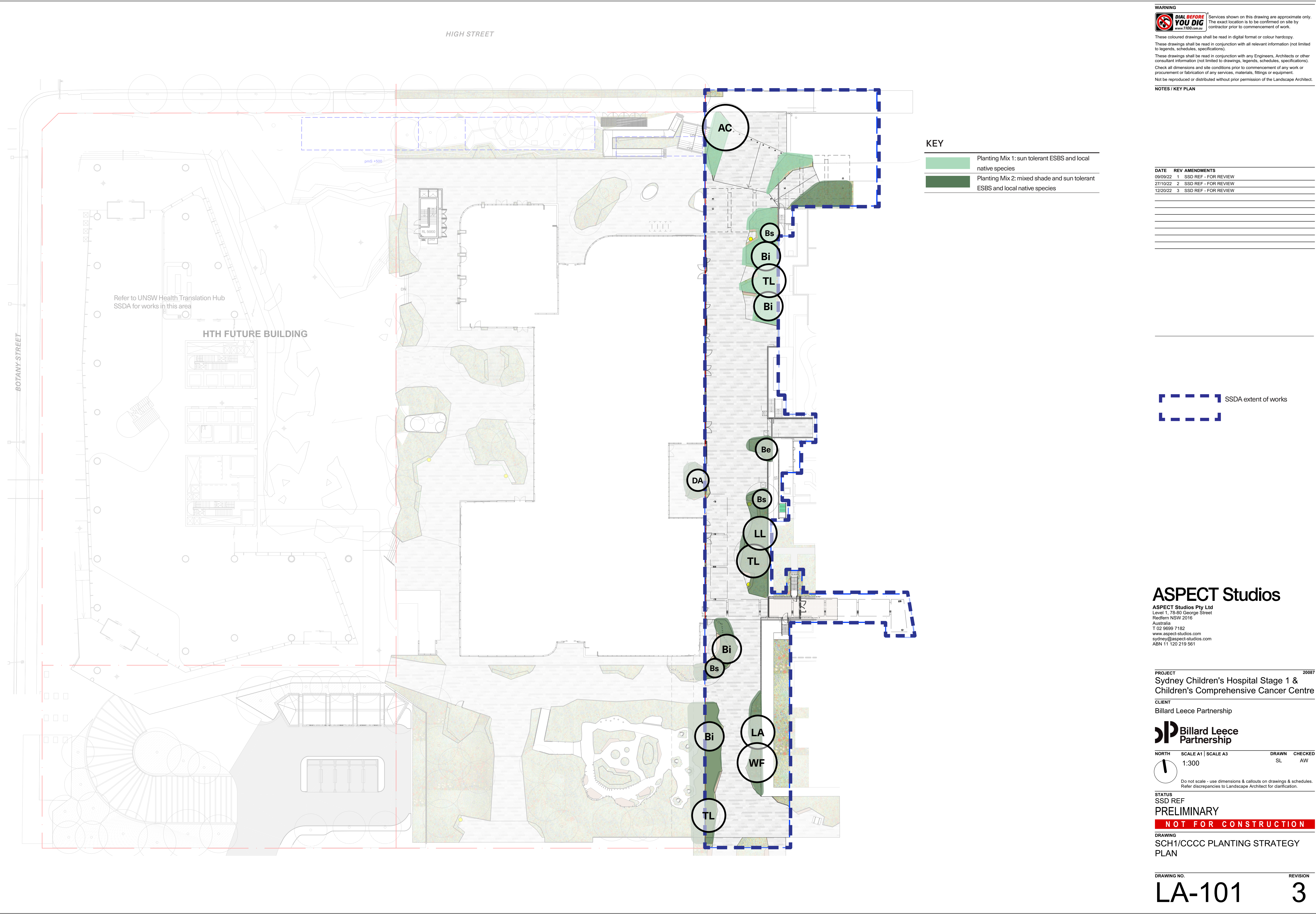
Do not scale - use dimensions & callouts on drawings & schedules.  
Refer discrepancies to Landscape Architect for clarification.

**STATUS**  
REF SUBMISSION  
**PRELIMINARY**  
**NOT FOR CONSTRUCTION**

**DRAWING**  
SCH1/CCCC LANDSCAPE PLAN

**DRAWING NO.** **LA-001** **REVISION** **3**





**WARNING**  
**DIAL BEFORE YOU DIG**  
www.1100.com.au  
Services shown on this drawing are approximate only. The exact location is to be confirmed on site by contractor prior to commencement of work.  
These drawings shall be read in digital format or colour hardcopy.  
These drawings shall be read in conjunction with all relevant information (not limited to legends, schedules, specifications).  
These drawings shall be read in conjunction with any Engineers, Architects or other consultant information (not limited to drawings, legends, schedules, specifications).  
Check all dimensions and site conditions prior to commencement of any work or procurement or fabrication of any services, materials, fittings or equipment.  
Not be reproduced or distributed without prior permission of the Landscape Architect.

**NOTES / KEY PLAN**

DATE	REV	AMENDMENTS
09/09/22	1	SSD REF - FOR REVIEW
27/10/22	2	SSD REF - FOR REVIEW
12/20/22	3	SSD REF - FOR REVIEW

**SSDA extent of works**

**ASPECT Studios**  
ASPECT Studios Pty Ltd  
Level 1, 78-80 George Street  
Redfern NSW 2016  
Australia  
T 02 9699 7182  
www.aspect-studios.com  
sydney@aspect-studios.com  
ABN 11 120 219 561

**PROJECT**  
Sydney Children's Hospital Stage 1 &  
Children's Comprehensive Cancer Centre  
**CLIENT**  
Billard Leece Partnership

**Billard Leece Partnership**  
**NORTH**  
SCALE A1 | SCALE A3  
1:300  
DRAWN SL  
CHECKED AW  
Do not scale - use dimensions & callouts on drawings & schedules.  
Refer discrepancies to Landscape Architect for clarification.

**STATUS**  
SSD REF  
**PRELIMINARY**  
**NOT FOR CONSTRUCTION**

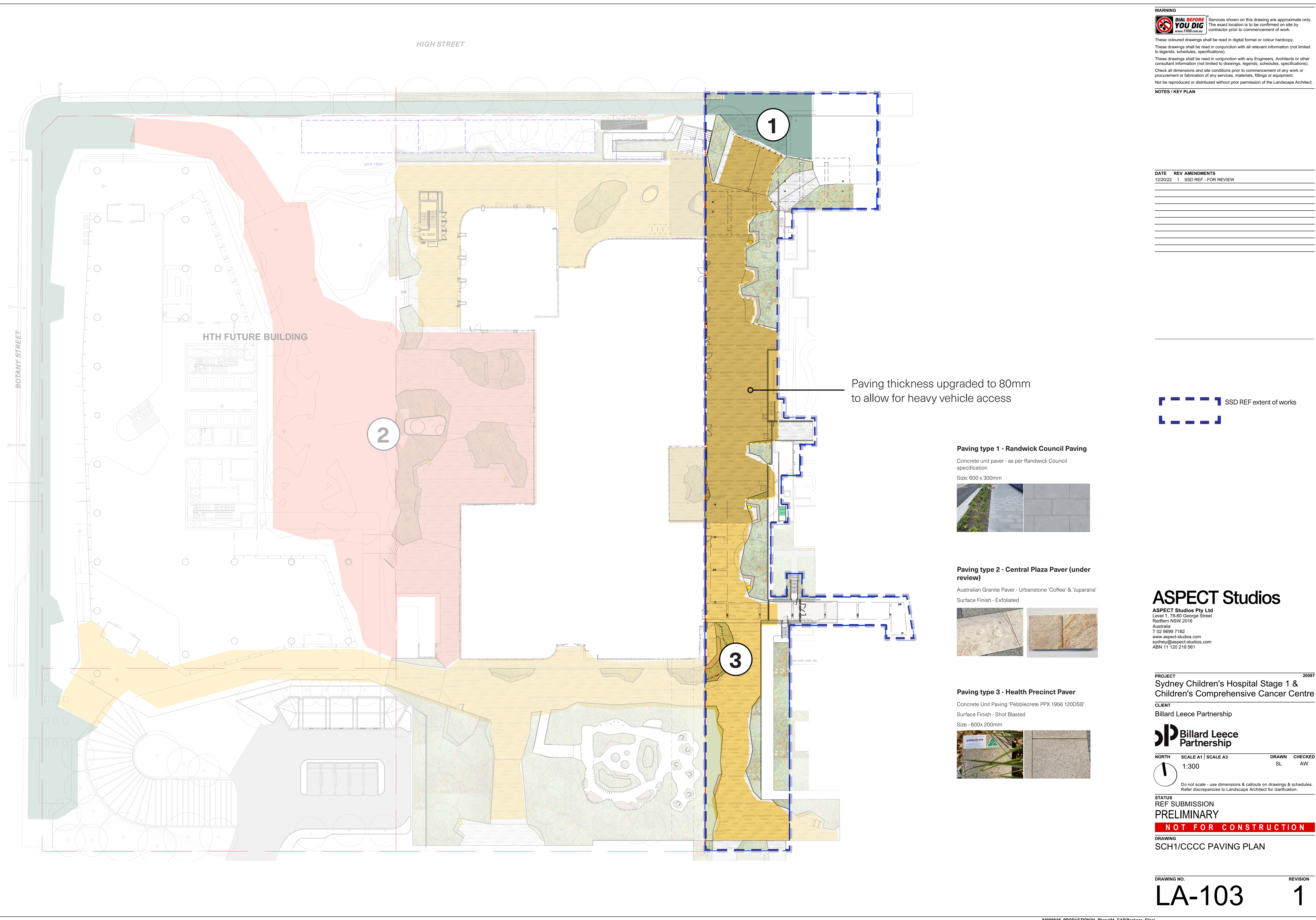
**DRAWING**  
SCH1/CCCC PLANTING STRATEGY  
PLAN

**DRAWING NO.**  
LA-101  
**REVISION**  
3









**WARNING**  
**DIAL BEFORE YOU DIG**  
www.1100.com.au  
Services shown on this drawing are approximate only. The exact location is to be confirmed on site by contractor prior to commencement of work.  
These drawings shall be read in digital format or colour hardcopy.  
These drawings shall be read in conjunction with all relevant information (not limited to legends, schedules, specifications).  
These drawings shall be read in conjunction with any Engineers, Architects or other consultant information (not limited to drawings, legends, schedules, specifications).  
Check all dimensions and site conditions prior to commencement of any work or procurement or fabrication of any services, materials, fittings or equipment.  
Not be reproduced or distributed without prior permission of the Landscape Architect.

**NOTES / KEY PLAN**

DATE	REV	AMENDMENTS
12/20/22	1	SSD REF - FOR REVIEW

Paving thickness upgraded to 80mm to allow for heavy vehicle access

SSD REF extent of works

**Paving type 1 - Randwick Council Paving**  
Concrete unit paver - as per Randwick Council specification  
Size: 600 x 300mm

**Paving type 2 - Central Plaza Paver (under review)**  
Australian Granite Paver - Urbanstone 'Coffee' & 'Juparana'  
Surface Finish - Exfoliated

**Paving type 3 - Health Precinct Paver**  
Concrete Unit Paving 'Pebblecrete PPX 1956 120DSB'  
Surface Finish - Shot Blasted  
Size - 600x200mm

**ASPECT Studios**  
ASPECT Studios Pty Ltd  
Level 1, 78-80 George Street  
Redfern NSW 2016  
Australia  
T 02 9699 7182  
www.aspect-studios.com  
sydney@aspect-studios.com  
ABN 11 120 219 561

**PROJECT** 20087  
Sydney Children's Hospital Stage 1 & Children's Comprehensive Cancer Centre  
**CLIENT**  
Billard Leece Partnership  
**Billard Leece Partnership**  
**STATUS**  
REF SUBMISSION  
**PRELIMINARY**  
**NOT FOR CONSTRUCTION**  
**DRAWING**  
SCH1/CCCC PAVING PLAN

**NORTH** SCALE A1 | SCALE A3 1:300  
DRAWN SL CHECKED AW  
Do not scale - use dimensions & callouts on drawings & schedules. Refer discrepancies to Landscape Architect for clarification.

**DRAWING NO.** LA-103 **REVISION** 1